

# ***USER MANUAL***

## **RY300T-9**

The company reserves the right to modify the appearance and accessories of the products without prior notice, all products shall prevail in kind.

© Please read this manual carefully before riding a motorcycle.



Please read this instruction manual carefully before riding a motorcycle.  
This manual is attached to the motorcycle after the motorcycle is sold

## Operating instruction 2023

Copyright (c) January 2023.  
All rights reserved  
Any reprint or unauthorized  
use without written approval  
of is strictly prohibited

Sincerely thank you for choosing our motorcycles. All the staff of our company would like to extend their high regards to you. With its excellent performance, luxurious and beautiful appearance, the motorcycles will bring you the greatest pleasure and convenience. Driving the motorcycles will make you more chic and charming.

In order to help you understand the day of the motorcycle, basic structure, performance, operation and maintenance methods, make your loved motorcycle to play the best performance, prolong service life, in particular, enables you to safer, more comfortable driving, before you driving motorcycle, please carefully read and fully familiar with the use of maintenance manual in the provisions and requirements, and please comply with them.

The company has professional maintenance technicians who can provide you with high-quality technical maintenance services.

The company-adheres to the quality and service tenet of "making consumers more satisfied", adhering to the spirit of excellence and continuous improvement, so it may change the design and specifications of the product at any time without notice. If you have other requirements, you can Contact our company's after-sales service center.

Have a nice drive. Thank you again for your attention

The instructions, data, specifications, etc. of this manual are compiled before the latest product information is printed. We have the right to continuously improve our products without any restriction. Due to changes in delivery time or design specifications, the actual vehicle may differ from the contents in this manual.

Motorcycle Safety Tips .....	2	Check before driving .....	10
Load and accessories .....	2	Gasoline check .....	10
Location of vehicle number .....	3	Check the oil .....	10
Name of each part .....	3	Engine cooling check .....	11
Left side view .....	3	Check and adjust front and rear brakes .....	11
Right side view .....	3	ABS anti-lock braking system .....	12
Functions and usage of each part .....	4	Description of the ABS system .....	12
Meter .....	4-5	Tire inspection .....	13
Ignition switch .....	5	Light inspection .....	13
Start button .....	6	Speedometer, horn troubleshooting .....	13
Headlight far and near light switch .....	6	Front and rear shock absorption and other investigations .....	13
Horn button .....	6	Regular maintenance .....	14
Turn signal switch .....	6	Battery fuse .....	14
Warning light switch .....	7	Air filter cleaning .....	14
Locker and seat lock .....	7	Idle speed adjustment .....	14
Helmet hook .....	7	Spark plug inspection .....	15
Battery .....	8	Crankcase oil addition and replacement .....	15-16
Audio operation .....	8	Change of oil in gearbox .....	16
Engine starting method .....	8	Troubleshooting table .....	17
Driving operation .....	9	Ignition system checklist .....	18
Drive correctly .....	9	Motorcycle parameter table .....	19
After the vehicle has stopped .....	9	Maintenance schedule .....	20
The vehicle has stopped .....	9	Product warranty instructions .....	21
Break-in .....	10		



**⚠ A warn**

In order to ensure safety, driving a motorcycle must be focused, safety requirements are clear before driving.

**Safe Driving**

Before starting the engine, conduct a pre-driving inspection (p. 9). In this way, accidents or parts damage can be prevented.

Many accidents occur among inexperienced drivers. Before driving, it should be confirmed that you really have driving qualifications, do not lend your motorcycle to people without a driving license.

Many accidents occur among inexperienced drivers. Before driving, it should be confirmed that you really have driving qualifications, do not lend your motorcycle to people without a driving license.

Should not be too close to other motor vehicles.

Do not drive into the "dead corner" of the car driver's sight

Strictly abide by the traffic rules, and do not allow to fight for the road.

Speeding is a major cause in many accidents, so the speed of the vehicle must not exceed the maximum speed limit of the road section. When changing or changing lanes, turn signal in advance to attract others' attention. Drive with special care at intersections, car park entrances and exits and on fast lanes.

Be especially careful when going up and downhill on rainy days, snowy days, and poor visibility. You should slow down and avoid emergency braking.

**Protective suit**

1. Please wear a safety helmet, face shield or goggles;
2. Comfortable clothes and bright colors;
3. Do not wear loose clothing that may get caught under a foot handle, etc
4. For safety, please wear flat shoes when driving.

**Modification attention**

Must abide by the national and local rules and regulations, do not dismantle or modify the motorcycle, in order to avoid unsafe accidents.

**Load and accessories**

It is important to note:

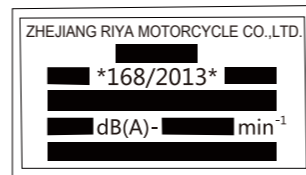
1. Maximum load of container: 10kg
2. The maximum load of the rear shelf: 5kg

**⚠ A warn**

When a vehicle is overloaded, its stability, handling performance and safety may be reduced.

The frame number, engine number and label are required for motorcycle registration. The frame number is engraved on the frame under the seat cushion, and the engine model and engine number are engraved on the lower part of the left crankcase. The rivet will be parked on the right side of the frame. Near the support.

Vehicle model and frame number label:



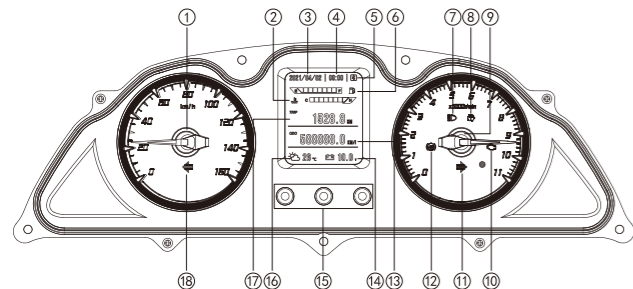
Engine model and engine number:



- |                   |                         |                           |
|-------------------|-------------------------|---------------------------|
| 1. Front wheel    | 8. Empty filter         | 15. Manipulate the handle |
| 2. Headlight      | 9. Engine number        | 16. Rearview mirror       |
| 3. Windshield     | 10. Tail light          | 17. Ignition switch       |
| 4. Side bracket   | 11. Muffler             | 18. Speedometer           |
| 5. Main support   | 12. Rear shelf          | 19. Braking system        |
| 6. Seat cushion   | 13. Frame code position | 20. Shock absorber        |
| 7. Shock absorber | 14. Signage             |                           |



## Instrumentation



- |                                |                           |
|--------------------------------|---------------------------|
| ① Speedometer                  | ⑩ EFI fault indicator     |
| ② Water temperature indication | ⑪ Right-turn indicator    |
| ③ Date                         | ⑫ ABS indicator           |
| ④ Time                         | ⑬ Total mileage           |
| ⑤ Bluetooth                    | ⑭ Voltage display         |
| ⑥ Fuel display                 | ⑮ Function button         |
| ⑦ High beam indicator          | ⑯ Atmospheric temperature |
| ⑧ TCS indicator                | ⑰ Sub-total mileage       |
| ⑨ Tachometer                   | ⑱ Left-turn indicator     |

## Speedometer

## Operations by Department

- ① Speedometer  
Travel speed is expressed in km/h or mph.
- ② Water temperature indication  
Indicates the temperature of the cooling water during engine operation.
- ③ Date  
Indicates the current date.
- ④ Time  
Indicates the time in 24-hour units.
- ⑤ Bluetooth  
Indicates the status of the phone's Bluetooth link.
- ⑥ Fuel gauge  
Indicates the amount of petrol in the tank. When the fuel gauge is close to the one compartment left, it means that there is approximately 2.0L of petrol left in the tank, please refill with 92# or above unleaded petrol as soon as possible.
- ⑦ High beam indicator  
This light comes on to indicate that the headlights are in the high beam position.
- ⑧ TCS indicator  
This light comes on to indicate that the TCS function is switched off.
- ⑨ Tachometer  
Is the engine speed per minute, per scale X 1000rpm.
- ⑩ EFI fault indicator  
a. The fault light comes on when the main switch is turned on and does not go off. The fault light goes off when the vehicle is started, indicating that the vehicle is normal.  
b. If the main switch does not illuminate when turned on or continues to illuminate after the vehicle has been started, the vehicle is faulty and should be

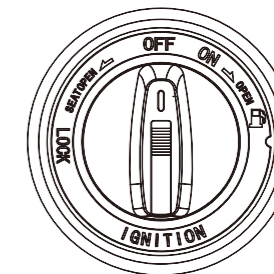
serviced at a dealership or service station.

- ⑪ Right-turn indicator  
This light is on to indicate that the front and rear right turn signals are on.
- ⑫ ABS indicator  
a. The indicator light comes on when the main switch is turned on and goes off when driving reaches 6km/h or more.  
b. If the indicator light comes on when the ABS system is faulty, have it checked at your dealer or service station.
- ⑬ Total mileage  
Indicates the total mileage.
- ⑭ Voltage display  
The battery voltage is expressed in volts (V).
- ⑮ Function button  
a. Left button: short press to switch between metric and imperial systems; long press to clear the maintenance interface.  
b. Middle key: long press to clear the subtotal.  
c. Right button: short press to switch to the normal/navigation interface; long press to enter the clock setting.
- ⑯ Atmospheric temperature indication  
Indicates the current atmospheric temperature.
- ⑰ Sub-total mileage  
Indicates the mileage of a single trip.
- ⑱ Left-turn indicator  
This light comes on to indicate that the front and rear left turn signals are on.

**⚠ A warn**

When the fuel gauge is close to the one compartment left, refill the fuel promptly to avoid the risk of damage caused by an idling fuel pump.

## Ignition main switch lock



LOCK : In this position the steering handle is locked and the locking key can be removed.

OFF : In this position the vehicle is completely disconnected and the locking key can be pulled out (engine off).

ON : In this position, the vehicle is fully powered and the locking key cannot be pulled out (the engine can be started).

SEAT OPEN : Storage box opening device.

Fuel tank cover opening device.

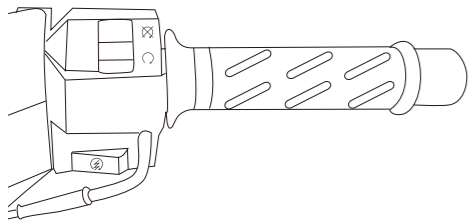
Indicates the direction of rotation.

**⚠ A warn**

Never operate the ignition switch key while the vehicle is driving.

Get out of the car, to prevent theft, please lock the direction of the head lock and take out the key.

Start button



First hold the brake grip, and then press the start button "⚡", the starting motor will drive the engine to start

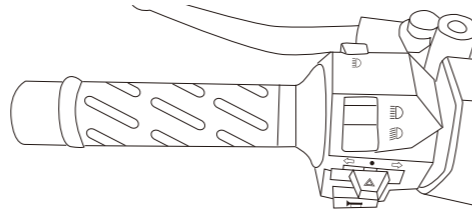
Headlamp switch between high and low light.

- When this position is pressed, the headlight switches to high beam.
- When this position is pressed, the headlight switches to a close light.

**PASSING**

Overtaking warning light, press down successively when switching to the close light, the headlight will flash to warn the vehicle in front.

Horn button



When the power is switched on, press the "📢" switch button when the horn will ring.

Turn signal switch

Turn the switch button to the position of "←", the left turn signal and the left signal light flash.

Turn the switch button to the position of "→", the right turn signal and the right signal light flash.

Turn signal OFF when switch button is in "●" or "OFF" position

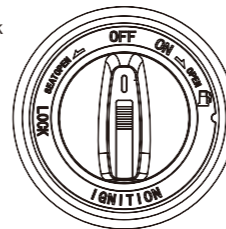
**⚠️ A warn**

1. When turning or changing lanes, turn on the turn signal and turn signal in time.
2. Turn signal will not be turned off by itself. Turn signal should be turned off in time after use.

Warning light switch

After parking, press the "⚠️" warning light switch, warning light, front position light, tail light. Press alarm light switch again, alarm light, front position light, taillight dark.

Storage box and seat lock



Open and close the cushion when placing or removing items from the storage box.

Opening method

1. With the engine off and the main switch in the "OFF" position, turn the key counterclockwise to open the cushion.

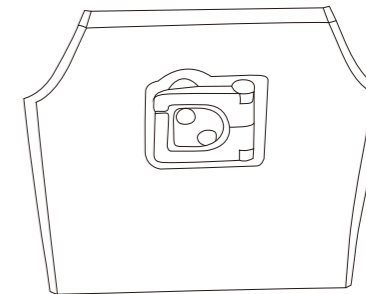
Close method

1. Put the cushion down and press the back end of the cushion downwards to automatically lock it.
2. Then gently pull the back end of the cushion upwards to make sure it is locked.

**⚠️ A warn**

1. The load of the storage box shall not exceed 10kg;
2. Do not store valuable items in the storage box.
3. When washing the car, there may be water, pay attention to the internal placement of items.

Helmet hook

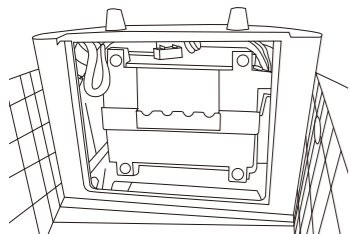


Positioned in front of the seat cushion, the helmet hook eliminates the trouble of wearing a helmet after parking.

**⚠️ A warn**

Please do not hang your helmet on the hook while driving.

## Battery



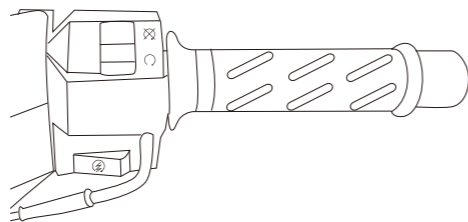
- 1、 The battery is placed in the storage box;
- 2、 The battery specification is 12V9Ah;
- 3、 The battery can be taken out by removing the cover, and the fuse is also placed in it.

## Audio operation



- 1、 Press the "⏻" power switch, MP3 works;
- 2、 Press the "⏻" power switch FM radio works.
- 2、 Press "⏻" to cut off the power.

## Engine start method



- 1、 Check the amount of engine oil and gasoline before starting;
- 2、 Support the motorcycle with the main bracket and return the side brackets to keep the rear wheels off the ground;
- 3、 Turn on the ignition switch to the "ON" or "⌚" position.

## Electric starting:

Hold the front brake grip or rear brake grip firmly, press the start button "⚡", the engine can start

**⚠ A warn**

Please pay attention to the operation of the motorcycle you are currently purchasing when it has the following functions:

- Single support flameout device: it can only be started after the single support is returned to the position;
- Anti-theft device: It acts as an anti-theft reminder when parking;
- Mechanical pointer instrument: This instrument is an optional style with digital instruments.

## Driving operation

## Get in and start:

- 1、 Keep the front brake handle in the braking position, push the car forward, and the main bracket bounces
- 2、 Step on the left side, sit straight back, left foot on the bottom to prevent tipping.
- 3、 While releasing the brake, slowly increase the throttle and the motorcycle will start.

## Warn prompt

⊗Don't increase the throttle sharply before driving, so as to avoid danger when the car rushes forward.

⊗When the rear wheel landing start must hold the brake, throttle open up to 1/4, must not increase, to prevent the vehicle out.

⊗Each electric start time shall not exceed 5 seconds, and the interval between two starts shall not be less than 10 seconds.

⊗When the engine is running, do not press the start button, otherwise the starter motor will be damaged

⊗Before starting, turn on the turn signal and confirm safety before driving.

## Drive correctly

During the initial 1000kilometers of the new car, the driving speed must be strictly implemented (page 9) running-in table

The speed adjustment is controlled by the throttle handle.

Increase the throttle and turn the throttle to the back, the speed becomes faster and the horsepower increases .

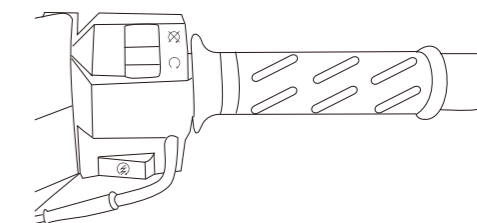
Decrease the throttle and turn the throttle to move forward, the speed will become slower and the horsepower will be reduced.

## Parking method

Turn on the turn signal early and make sure that there is no car approaching behind, then stop slowly.

Return the throttle (throttle lever forward), hold the brake handle, and brake slowly. At this time, the brake lights will light up the vehicles behind to warn the vehicles behind.

## After the vehicle has stopped



- 1、 Turn OFF the turn signal and press the engine flameout switch to turn the ignition switch to OFF.
- 2、 Push the car to a level ground that does not hinder traffic.
- 3、 Grasp the steering handle with your left hand, grab the handle (or armrest) of the saddle seat with your right hand, step on the main bracket, and lift it up with your right hand to support the main car bracket.

**Running-in**

Whether the vehicle speed during the running-in period can be controlled correctly will directly affect the performance and service life of the engine. Therefore, the running-in speedometer shown in the following table should be strictly implemented.

road haul(km)	speed(km/h)
0-600	≤45
600-1000	≤60

1. New motorcycles should be run-in strictly in accordance with the running-in specifications and avoid increasing the throttle.
2. Remember not to drive a new car at the same speed for a long time.

**Check before driving**

Before driving every day, in order to avoid the trouble caused by many failures during driving, the motorcycle should be checked regularly to ensure that the motorcycle has good performance and achieve the effect of safe driving.

**Gasoline check**

After the ignition switch is turned on and the power is turned on, observe the gasoline meter. When the pointer of the meter is in the red zone, it indicates that the remaining gasoline is about one liter. Please replenish gasoline in time. Please use gasoline with an unleaded value of 92# or higher.

**⚠️ A warn**

When replenishing gasoline, the engine must be turned off, and gasoline must be prevented from dripping on the hot.

**Engine oil check**

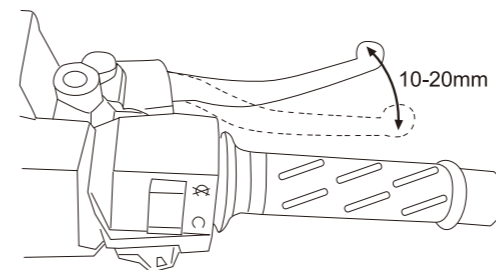
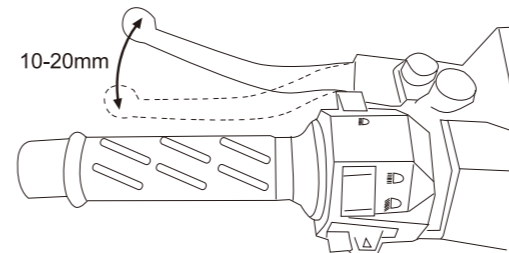
1. On a flat ground, prop up the main car bracket ;
2. Take out the crankcase oil dipstick, observe the oil level, when the oil level is close to the lower limit, please add oil to the upper limit .
3. The oil capacity is about 1.6 liters, if it is replaced, it is 1.5 liters.
4. Do not exceed the upper limit of the oil dipstick .
5. Fill the gearbox to the lower thread position of the threaded port, add 0.23 liter, grade GL-4 SAE 85W-90

**Warn prompt**

1. In the course of use, the amount of machine should be checked frequently;
2. The vehicle is inclined or just stopped, and the oil level is inaccurate;
3. Check when the engine has just stopped to avoid burns.

**Engine cooling check**

1. Observe the water temperature display on the meter. When the temperature exceeds the upper limit line, please add coolant in time.
2. Add coolant position: in the direction to the bottom right.

**Inspection and adjustment of disc brake**

1. Check whether the operation of the brake handle is flexible, and the position of the brake handle when it starts to act from the free state .The distance between the two positions is the free stroke, and the free stroke at the end of the brake grip is 10-20mm. If you need to adjust, you can open the bleed plug on the brake caliper, drain the appropriate hydraulic oil or add hydraulic oil to the hydraulic oil tank to adjust the brake grip stroke.
2. Check whether the brake pads are worn to the limit. If they are worn or worn, replace them with new brake pads immediately.
3. Check whether the amount of brake fluid is lower than the lower limit mark of the hydraulic pump. If it is, replenish the specified DOT3 hydraulic fluid in time.
4. Check the brake system for oil leakage

**⚠️ A warn**

- ⊗The disc brake adopts high-pressure braking. For safety, please regularly repair or replace it according to this manual.
- ⊗If the brake system or brake pad is damaged, please hand over the work to professional maintenance personnel
- ⊗Brake hydraulic oil is harmful to the eyes or skin of the human body, If it is stained, please wash it in time or consult a doctor for diagnosis.
- ⊗Do not splash the hydraulic oil on the paint or plastic surface, it will corrode the surface of these substances.

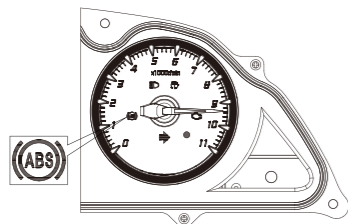


## ABS anti-lock braking system

### ABS indicator

1. The ABS indicator light is located in the middle of the vehicle's tachometer (shown). The light comes on when the main switch is switched on, but does not go off automatically, and the ABS light goes off when driving speed reaches 6km/h.

2. If the ABS system is abnormal, the ABS indicator light will come on, at this time the ABS system may lose its function, please do not panic, its original brake system is still working normally.



#### ⚠️ A warn

1. You may feel a little vibration in the brake handle when the ABS system is in action, this is normal.
2. The ABS system does not activate when the vehicle speed is below 6km/h.
3. When the battery fails or malfunctions it will cause the ABS system to lose its function and the ABS fault light will come on.

## Description of the ABS system

1. In case of emergency braking, the ABS system is designed to help prevent the tyres from locking up during emergency braking, allowing the driver to steer smoothly, and the ABS system automatically controls the braking force to reduce tyre slippage.

2. The ABS system does not reduce the braking distance, which is even longer than that of a vehicle without ABS when driving on soft, uneven or downhill roads, so vehicles with ABS systems can perform their maximum function when driving on flatter roads.

3. The ABS system is equipped with an ABS controller and front and rear wheel speed sensors. Using tyres that do not meet the factory specifications may affect the wheel speed sensors and cause the ABS system to operate abnormally.

#### ⚠️ A warn

The use of tyres that do not conform to the factory specification may result in the ABS system not functioning properly and may even cause accidents for the driver due to the ABS anti-lock braking system not functioning properly, so please make sure to use the specified tyres.

## Tire inspection

1. Check the tire pressure before and after regularly.
2. Check tire wear, cracking, such as tire central pattern depth exceeding value (front wheel less than 1.6mm, rear wheel less than 2.0mm) or turtle cracking, please immediately replace the new tire.
3. Check whether there are foreign objects such as metal, glass fragments, broken stones, etc. in the tire groove, remove them before driving.

	Tire specifications	Tire pressure (kpa)
Front wheel	120/80-14	225±10
Rear wheel	150/70-13	225±10

#### ⚠️ A warn

If the tire pattern is excessively worn, the stability of the motorcycle will decrease, and it may cause an accident due to an out-of-control direction.

## Light inspection

1. Check the far and near headlights, taillights, and brake lights.
2. Check the front and rear turn signals and instrument lights.

## Speedometer, horn, etc. inspection

1. Drive at low and medium speeds, and observe whether the pointer of the meter rotates normally;
2. Turn on the power surge and press the horn button to see if the horn will sound and the sound quality is normal.

## Inspection of front and rear shock absorbers

1. Press the handle and seat cushion, shake it up and down, observe whether the front and rear shock absorption work and return performance are good.
2. Check whether there is any seepage or oil leakage in the shock absorber, and if so, go to the special maintenance point for repair or replacement.

## Rearview mirror, license plate inspection

1. Sit on the mat, check whether the rearview mirror Angle is normal, whether the rearview mirror loose.
2. Check whether the license plate is damaged or loose.

Regular maintenance

In order to prolong the service life of your car, please carry out regular maintenance (refer to "Regular Inspection and Maintenance Items and Schedule" for specific requirements).

If your motorcycle runs on the poor road for a long time, the maintenance period of part of the project should be shortened to ensure the reliability of the motorcycle. During the run-in period of the first 1000 kilometers, all parts of the original engine have been run-in. At this time, all components should be adjusted well, all fasteners should be tightened, contaminated oil should be replaced, and maintenance and maintenance checks should be carried out in time during the run-in period to ensure longer service life and better performance of the engine.

Battery fuse

This motorcycle uses a maintenance-free sealed battery. If the car has not been used for a long time, please remove the battery and store it in a cool and ventilated place. When installing it back into the car, it should be fully charged first. Do not connect the wrong electrode during installation.

The fuse is in the fuse box attached to the battery. Make sure that the power supply has been cut off when replacing it. Open the fuse box, replace the fuse and reinstall it. The fuse size is 15A.

Air cleaner clean

The accumulation of dust in the air filter is the main reason for the decrease in engine power and the increase in fuel consumption. Please clean or replace it regularly according to the maintenance items and schedule. Gently tap the paper filter element to shake off the dust through vibration, or use a soft brush to remove the dust on the surface and gaps of the filter element.

**⚠️ A warn**

- 1、 Do not deform the filter element during cleaning.
- 2、 Paper filter elements cannot be cleaned with water or oily solvents.
- 3、 The filter element is dirty or damaged and should be replaced.
- 4、 When installing the air filter-it must be installed in place, otherwise the dust will be directly sucked into the cylinder, causing wear, reducing horsepower, and affecting the life of the engine.
- 5、 Do not let water into the air filter when washing the motorcycle.
- 6、 When driving on poor road conditions and dusty roads, you should frequently increase the number of cleanings.

Idle speed adjustment

Motorcycle EFI idle speed has been set to 1550 ± 100r/min, no adjustment is required.

Spark plug inspection

The failure of the spark plug is one of the reasons why the engine is difficult to start. Under normal conditions, the gap between the electrodes of the spark plug is 0.6-0.7mm (as shown in the figure), and the electrode of the spark plug is light brown. The electrode of the spark plug is polluted and the gap is too large to cause jump The fire is not complete and the ignition energy is reduced.

Standard spark plug is CPR8EA.

Warn prompt

After the engine is working, the temperature will be very high, beware of scalding; after the spark plug is installed, use a spark plug wrench to tighten it, do not use spark plugs other than the specified model.



Oil replacement in the gear box

Exchange period

- 1.Replace once at 300KM for new vehicle maintenance and once every 3000km or 5000km depending on road conditions.
- 2.Recommended gear oil  
GL-4 grade SAE 85W-90 specification gear oil.
- 3.Gear oil capacity: (see label on the bonnet)  
Full capacity: 0.28L Exchange volume: 0.23L

Exchange method

- 1.Prop up the main stand of the vehicle on a flat area.
- 2.Remove the drain bolt① and oiling bolt ②.



3. Implemented when the engine is warm, residual gear oil is more likely to flow out.
4. Wipe the oil drain bolt clean and tighten it.
5. Inject the gear oil slowly in the gear oil injection hole to a position parallel to the lower eye of the hole.
6. After the gear oil has been filled, the oiling bolt is indeed tightened to prevent oil leakage.

**⚠ A warn**

Please change the gear oil regularly when driving in the rain, for long periods of time or under heavy loads.

**Crankcase oil addition and replacement**

**Replacement period**

1. Change the oil for the first 300km of maintenance on a new vehicle, then check the oil level every 1000km and change it every 2000km.
2. Oil capacity full capacity: 1.6L Exchange volume 1.5L
3. Recommended engine oil: SL 10W-40.

**Exchange method**

1. Remove the oil dipstick ①, Remove the drain bolt ② and allow all the oil to flow out.
- ★ Changing after the engine has warmed up will allow the oil to flow more easily.
2. Wipe the oil drain bolt clean and lock it tight.
3. Fill with new oil in a volume of 1.5L
- ★ Use the oil measuring tape to confirm.
4. The oil dipstick must be tightened securely.
5. After running the engine to warm it up, stop it for 10-20 seconds and check the oil level again.



**⚠ A warn**

Change the oil for the first 300km of maintenance, then check the oil level every 1000km and add to the oil dipstick between the upper and lower limits if insufficient, and change the oil every 2000km.

FAULT PHENOMENON	CAUSE ANALYSIS	ELIMINATION METHOD
Startup difficulty or failure	Improper operation	Follow the instructions
	Run out of petrol	Add petrol
	Oil passage blocked	Check and dredge the oil circuit
	Dirty gasoline or has water	Cleaning tank or replace gasoline
	Air filter blocked	Clean the air filter element
	Loose spark plug and water leakage	Tighten
	Exhaust pipe leakage	Tighten bolts and nuts or replace asbestos pads
	Air leakage at the joint surface of cylinder head and cylinder block	Tighten bolts and nuts or replace gaskets
	Spark plug failure	Adjust or replace
	Insufficient power	Charge or replace the battery
Refueling flameout	Other faults	Check the pits
	Blockage of EFI oil line Mixture is too lean or the carburetor oil pipe nozzle is blocked.	Check the pits and dredge the oil circuit
Low speed flameout	Blocked oil and gas paths	Clean oil circuit and gas circuit
	Other faults	Check the pits

FAULT PHENOMENON	CAUSE ANALYSIS	ELIMINATION METHOD
Unstable operation	Oil passage blocked	Dredge oil
	Carbon deposit or oil stain on spark plug electrode	Clean up
	Carbon deposition in exhaust port and muffler	Clean up
	Engine overload operation	Turn off the engine to avoid long-term high-speed operation
	Too much oil stains in the fan	Clean up
	Too much oil stain on the cylinder radiator	Clean up
	Insufficient engine oil	Add specified oil
	Other faults	Check the pits
Automatic stop	Steam parking is exhausted or oil circuit is blocked	Add gasoline or dredge the oil circuit
	Engine overload operation	Turn off the engine to avoid long-term high-speed operation
	Too much oil stains on the fan and cylinder fins	Clean up
	Other faults	Check at the maintenance station
Poor shock absorbers	Too much dirt accumulates in the shock absorber which hinders movement	Remove dirt
	Other faults	Check at the maintenance station
Fro other faults ,please goto the maintenance station for inspection and troubleshooting		

SIZE (mm) (LX WX H)	2200 X 810 X 1350	BATTERY SPECIFICATIONS	12V 9AH
WHEELBASE (mm )	1560	IGNITION MODE	ECU
CRUB WEIGHT(kg)	184	IGNITION PLUG	CPR8EA
MAXIMUM SPEED(km/h)	125	LUBRICATION SYSTEM	Pressure spra
MAXIMUM LOAD(kg)	155	CLUTCH	Dey-type block
FUEL CONSUMPTION(L/100km)	3.7	CLUTCH FORM	CVT
TYRE SIZE	Fr 120/ 80- 14 Re 150 / 70- 13	FUSE SPECIFICATION	15A/20A
BRAKING MODE	Disc brake(ABS)	HEADLAMPS	12V10W/20W
OPERATION MODE	Manual braking	PARKING LIGHTS	12V10W/2.4W
ENGINE MODEL	1P73MN-3	TURN SIGNAL	Fr 12V2.55W Re 12V0.6W
WORKING VOLUME(ml)	<b>275.8</b>	TAIL LIGHTS	Brake:12V2.2W Rear Position: 12V4.6W
STARTING SYSTEM	Electric start	METER LAMP	12V5W
OIL QUANTITY (L)	1.6	GEARBOX OIL CAPACITY(L)	0.28

Due to the continuous improvement of our products, vehicles may be different from the contents of the ma nual. Please understand.

List of regular maintenance to reduce pollution

For the safety of your vehicle and to maintain its performance and age, and to reduce pollution emissions, please do regular inspections and maintenance.

Work Item	Maintenance Miles	300	1000	2000	3000	4000	5000	6000	7000	8000	9000	10000	11000	12000	13000	14000	15000	Note
Lubrication system	Engine oil	R	I	R	I	R	I	R	I	R	I	R	I	R	I	R	I	I: Check A:Adjustment C:Clean R:Replace T:Locking M:Maintenance promotion D:Diagnostic check
	Oil filter (including right tank primary oil filter, right cover secondary oil filter)	C		C			C					C					C	
	Gear oil	R					R					R					R	
Fuel supply system	Fuel filter			I			I					I					I	- For maintenance and diagnostic checks, please contact your dealer's service station throughout the province and follow the standard procedures.
Air supply system	Air filter/CVT chamber sponge			R		R		R		R		R		R		R		
	Activated carbon tank			I			I					I					I	
	Intake manifold screw						I					I					I	
	PCV evaporation control valve			I			I					I					I	
	Control of all relevant air lines			I			I					I					I	
Driveline	Catalytic converter			I			I					I					I	
	Cam chain			I			I					I					I	
	Drive chain			I			I					I					I	
	Drive belt			I			I					I					I	
	Valve clearance			I			I					I					I	
Ignition System	Spark plug			I			I					I/R					I	-If, during operation or inspection, the vehicle is found to require cleaning and lubrication, adjustment or replacement, and if it does not seriously affect pollution emissions, this can be done and recorded directly. If there is a serious impact on pollution emissions, this must be reported and approved.
	Ignition lines						I					I					I	
Introducing Management System	Throttle valve body			D			M/I		D			M/C		D			M/I	
	Fuel nozzle			D			D		D			D		D			D	
	Idle air bypass valve			D			D		D			D		D			D	
	Cooling water temperature sensor			D			D		D			D		D			D	
	Intake air temperature and pressure sensor			D			D		D			D		D			D	
	Tipping sensor			D			D		D			D		D			D	
	Ignition Coil			D			D		D			D		D			D	
	Battery			D			D		D			D		D			D	
02 Sensor			D			D		D			D		D			D		
Others	Important body bolts	T	T	T	T	T	T	T	T	T	T	T	T	T	T	T	T	
	Muffler cover screws	T	T	T	T	T	T	T	T	T	T	T	T	T	T	T	T	
	Braking system	I	I	I	I	I	I	I	I	I	I	I	I	I	I	I	I	
	Cooling water			I			I					R					T	

Product warranty instructions

In order to ensure the safety and reliability of the vehicle, please read this manual carefully in accordance with the principle of being responsible to the user, and use, maintain and maintain your vehicle correctly;

- 1、 After the motorcycle leaves the factory (from the date of invoice) - within a year, or the mileage is not more than 10000 kilometers (as long as it reaches one of the conditions), and comply with the provisions of the "operation manual", all damaged parts due to poor manufacturing quality implement "three guarantees".
- 2、 Under the conditions of complying with the "Instructions for use" various rules of use and maintenance, the parts whose crossing layer and paint layer will automatically peel off within one month (with a mileage of less than 1000 kilometers) can implement the "Three Guarantees".
- 3、 Under the condition that the above conditions are met, the whole vehicle, the whole machine, and the main parts are damaged.The user should properly maintain the original condition of the damage and contact the factory's special technical service department or the factory in time. It is a product quality problem and the "three guarantees" are implemented. If the loss is caused by improper transportation and storage, improper use, poor maintenance, or self-repair, the user shall be responsible for the loss.
- 4、 Vulnerable and consumable parts, such as: rearview mirrors, spark plugs, fuses, bulbs, tires, seals, etc. are damaged, do not implement the "three guarantees".

- Warm tips: 1、 When sending the letter, please indicate the date of purchase, mileage, engine number, frame number, date of manufacture, warranty card, repair certificate, etc.
- 2、 Contact "three guarantees" service should bring the certificate of quality, invoice.